



PFLA PIPELINE  
FACT SHEET SERIES

# WILDFIRE PREVENTION FOR MANAGED FOREST OWNERS

Taking steps to reduce the risk of wildfire on private managed forest land can include **fuel management**, and for those with onsite structures or dwellings it can also include **structure protection**. This Fact Sheet outlines tips for both, and includes references for more information.

---

# FUEL MANAGEMENT

“Current wildfire trends, both in B.C. and Canada, show increased impacts to values from unwanted wildfires and associated suppression costs, increased threats to communities and infrastructure, and increased losses of natural resources.”

[www2.gov.bc.ca/gov/content/safety/wildfire-status/prevention/fire-fuel-management](http://www2.gov.bc.ca/gov/content/safety/wildfire-status/prevention/fire-fuel-management)

Fuel management is an important part of mitigating the risk of wildfire. Fuel management involves the modification of a forest structure to reduce forest fuel accumulations available in a wildfire. The goal for fuel management is to create fire resilient ecosystems.

Before carrying out any type of fuel management work, consider the need for a fire hazard and/or abatement assessment, a fire management plan, and a prescribed fire management plan or prescription. There are a variety of other assessments that may be required, including archaeological, riparian and danger tree; the above list should not be considered all-encompassing.



A dry interior Douglas fir stand pre- (left) and post- (right) fuel treatment.

## Did You Know?

Forest professionals ensure that practices applied to forest lands comply with legislative requirements, including the Wildfire Act. Forest Professionals BC (FPBC) maintains a public directory of forest professionals that includes registration history, status, practice areas, and location. Visit: [www.fpbc.ca/public-interest/registrant-directory](http://www.fpbc.ca/public-interest/registrant-directory).

# FUEL MANAGEMENT

## Tools For Fuel Management

### **Fuel Management Practices 2024 (PDF, 15.3MB)**

This document provides guidance for planning and conducting fuel management activities in B.C.

[https://www2.gov.bc.ca/assets/gov/public-safety-and-emergency-services/wildfire-status/prevention/fire-fuel-management/fuels-management/2024\\_fuelmanagementpracticesguide1.pdf](https://www2.gov.bc.ca/assets/gov/public-safety-and-emergency-services/wildfire-status/prevention/fire-fuel-management/fuels-management/2024_fuelmanagementpracticesguide1.pdf)

### **Fuel Management Efficacy Project 2020 (PDF, 9.9MB)**

This case study evaluated the efficacy of two fuel treatment approaches, thinning and broadcast burning.

[https://www2.gov.bc.ca/assets/gov/public-safety-and-emergency-services/wildfire-status/prevention/fire-fuel-management/fuels-management/fuel\\_treatment\\_efficacy\\_project\\_finaldocx.pdf](https://www2.gov.bc.ca/assets/gov/public-safety-and-emergency-services/wildfire-status/prevention/fire-fuel-management/fuels-management/fuel_treatment_efficacy_project_finaldocx.pdf)

### **Pile Construction and Burning Guidance 2023 (PDF, 3.1MB)**

This document is intended for use by practitioners planning fuel management treatments on Crown, Municipal, First Nations or privately-owned lands.

[https://www2.gov.bc.ca/assets/gov/public-safety-and-emergency-services/wildfire-status/prevention/fire-fuel-management/fuels-management/wrrpileconstructionandburningguidance\\_final\\_2023\\_june\\_06.pdf](https://www2.gov.bc.ca/assets/gov/public-safety-and-emergency-services/wildfire-status/prevention/fire-fuel-management/fuels-management/wrrpileconstructionandburningguidance_final_2023_june_06.pdf)

### **ABC FP Guidelines, Fire & Fuel Management (PDF, 561KB)**

This reference is for professional considerations related to fire and fuel management.

[http://member.abcfp.ca/web/Files/policies/Fire\\_Fuel\\_Management-Interim\\_Guidelines.pdf](http://member.abcfp.ca/web/Files/policies/Fire_Fuel_Management-Interim_Guidelines.pdf)

### **2020 Wildfire Threat Assessment Guide (PDF, 1.9MB)**

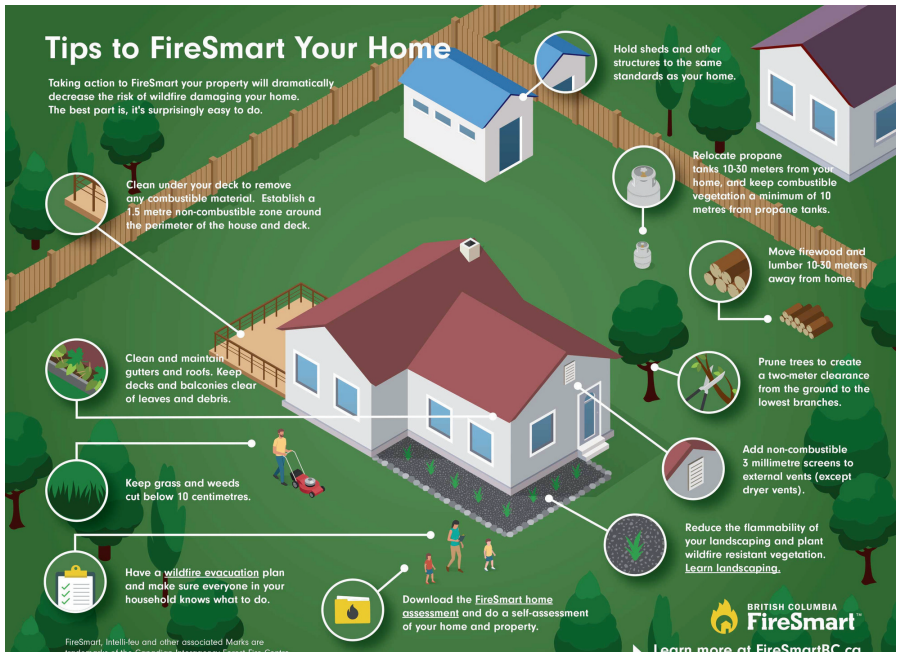
This document provides an updated approach to assessing fuel hazard in the Wildland Urban Interface (WUI) in order to inform wildfire risk reduction and fuel treatment planning.

<https://www2.gov.bc.ca/assets/gov/public-safety-and-emergency-services/wildfire-status/prevention/fire-fuel-management/fuels-management/2020-wildfire-threat-assesment-guide-final.pdf>

# STRUCTURE PROTECTION

Structure protection is an important consideration for private managed forest landowners with dwellings or other structures on their forest lands. Structural protection, using FireSmart principles, can dramatically decrease the risk of wildfire damage to a home.

FireSmart BC is a provincial program, based on the FireSmart Canada model, committed to educating British Columbians on the risks of wildfires and mitigating their impact through the implementation of homeowner and community based solutions.



## Tools For Structure Protection

### FireSmart BC Homeowner's Manual - PDF

<https://firesmartbc.ca/resource/firesmart-bc-homeowners-manual>

### FireSmart 101

A free, one-hour course for those getting started with FireSmart.

<https://firesmartcanada.ca/programs/firesmart-101>